

LARGE FORMAT PHOTO PRINTERS
SURECOLOR SC-P6530E/P6530D/
P8530D/P8530DL/P8530DM

EPSON
EXCEED YOUR VISION

AMPLIFY YOUR IDEAS WITH TOP CLASS PRINT QUALITY.

EPSON
EXCEED YOUR VISION



Transform your ideas into striking true-to-life prints with Epson's P-series printers.

Nothing beats seeing life injected into your ideas, turning them into picturesque prints in vivid and vibrant colours with top-class accuracy. Equipped with the Epson's proprietary PrecisionCore™ MicroTFP printheads, the Epson SureColor P-Series photographic printers take pride in their precise and reliable print productivity, along with the colour-accurate reproduction with Epson genuine UltraChrome PRO 6 inks. With high installation flexibility and seamless printing workflow, increase your print efficiency today!



IT'S IN THE DETAILS.



LFP New Architecture Run

**ULTRACHROME
PRO 6 INK**



PRECISIONCORE
PRINTHEAD

Highest Standards in Print

The additional grey ink in the UltraChrome PRO 6 inks offers smooth and natural colour gradation in every print.

Installation Flexibility

Flat top design allows for easy placement of printer in challenging and narrow spaces, giving businesses more options in installation.

Boosted Efficiency

Improved print speeds and continuous automatic printing with dual rollers* help ensure high productivity with minimal downtime.

*Applicable for SC-P6530D/P8530D/P8530DL.

LARGE FORMAT PHOTO PRINTERS
SURECOLOR SC-P6530E/P6530D/P8530D/P8530DL/P8530DM

P
 SERIES

Consistently and efficiently delivering top-notch gallery-quality photos, Epson's SureColor P-Series employs an unprecedented level of innovative technology. Coupling PrecisionCore™ technology with UltraChrome PRO 6 Inks, high accuracy and resolution can be achieved allowing the finest details to stand out.

High Quality Poster Prints

High-Production Indoor Signage

Professional Photography

Fine Art Reproduction

Photographic Display

PrecisionCore MicroTFP printheads

INK TECHNOLOGY

Accurate Colour Reproduction

Be ready to impress with vivid prints by your Epson P-series printers. Delivering superb image quality with true-to-life colour accuracy, Epson's UltraChrome PRO 6 inks bring prints to a whole new level of professionalism.



Gallery Standards

6-Colour ink set delivers exceptionally wide colour gamut and high black density, producing photographic prints that are of gallery standards.



Photographic prints



Professional Black-and-White prints

Wide Variety of Media

Professional printing can be done on a variety of media, such as artist canvas or premium photo papers.



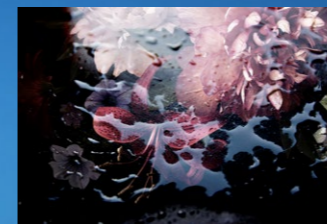
Matte media



Gloss media

Prints That Last

Epson's UltraChrome PRO 6 inks are water-, smudge- and fade-resistant, allowing prints to be durable and long-lasting.



Water and smudge resistant



Fade resistant

High-Capacity Ink System

Epson UltraChrome PRO 6 ink delivers professional quality output with either high-capacity ink cartridges or replaceable ink packs*, depending on your printing needs.



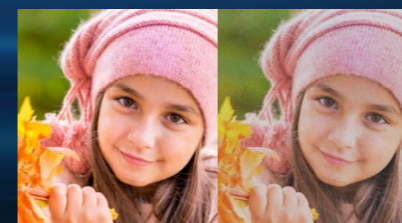
Ink cartridges



*Ink packs for SC-P8530DL only.

Smoother Gradation for Professional Perfection

Utilising the innovative two-level black ink technology that simultaneously employs Photo Black and Matte Black, Epson's UltraChrome PRO 6 inks produce rich true-to-life black density and grey balance to ensure top-notch quality in every print. Generating smooth gradients, transitions, and neutral grayscale in every photo.



UltraChrome inks

Others



Black

Cyan

Magenta

Yellow

Grey (NEW)

PRINTHEAD TECHNOLOGY

Epson's PrecisionCore MicroTFP printheads deliver precise ink drop control with variable-sized droplets, allowing every print to be reproduced in crisp clarity and sharpness. For photos that require extremely precise line details, definite sharp text and striking colours, trust your P-series printers to deliver world-class accuracy for every print.



ALL-NEW ERGONOMIC DESIGN

Compact with Installation Flexibility

With a flat back design, Epson's P-series printers can be easily arranged in a plethora of layouts according to your space's fit. With high installation flexibility, the compact printers maximise space usage and fit perfectly, even in narrow spaces.



Up to 44" Wide Dual Roll* Design

Management of prints have never been made easier with the dual roll 44" wide-format media* configuration that helps maximise productivity and increase efficiency.



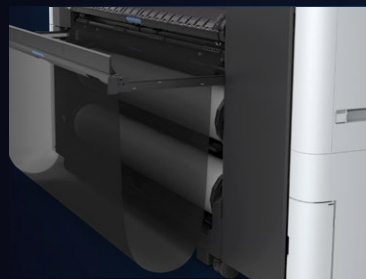
Seamless Operation

Operating with top-tier reliability, the Epson SureColor P-series saves time and manpower with the Automatic Roll switching, simplifying the loading of new media rolls. *Only available for P6530D, P8530D/DL/DM. Minimising downtime, the seamless operation ensures continuous printing and smooth operation.



USER-FRIENDLY FEATURES

Conveniently check the status of your professional prints with user-friendly features on your P-series printers.



Final printouts are held in a retractable print basket. The in-built storage space minimises clutter.



USB Direct Print without the need of a PC.

The 4.3-inch full-coloured touch panel allows easy and quick access to print jobs and printer function.



LED light allows operators to check on the print status conveniently and quickly.



EFFICIENT WORKFLOW MANAGEMENT

Epson Smart Panel

With the Epson Smart Panel app, users can set up, monitor, print and scan through an iOS or Android device.

Conveniently set up, monitor, print, and scan on your Epson printers and easily commence print jobs from your fingertips. With a wide variety of configuration features, you can also customise the app according to your requirements into an all-in-one management app.



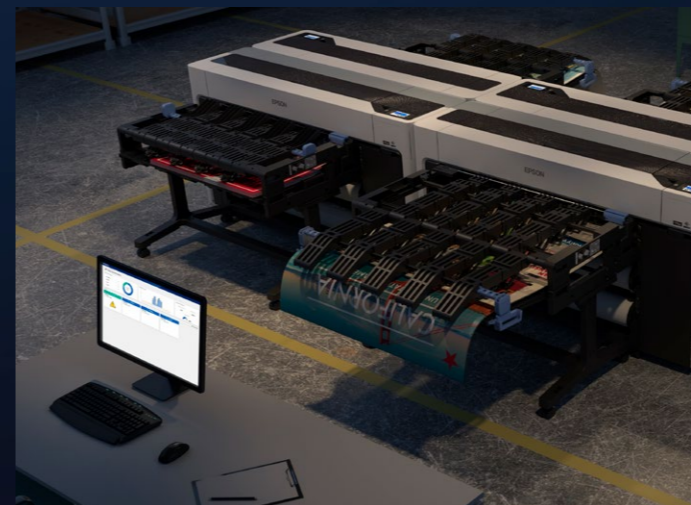
Printing with Adobe PostScript

Adobe PostScript allows powerful image processing and reproduction that guarantees seamless and worry-free printing of vivid, crisp prints. With the all-new Adobe Embedded Print Engine, your business will no longer have to fret about colour accuracy and precise line printing with improved transparent and overprint layers. *Only available for P6530D, P8530D/DL/DM.



Epson Cloud Solution PORT

Managing your printers is made easy and hassle-free with Epson's Cloud Solution PORT. Operators can monitor equipment and printer fleet across different sites from production floor or remotely, on PC or a mobile device without fuss. Boost operational efficiency by controlling, analysing and managing your printer fleet centrally from one intuitive interface while troubleshooting any rare issues.



Epson Cloud Solution
PORT

SPECIFICATIONS

MODEL NUMBER	SC-P6530E	SC-P6530D
SKU Number	C11CJ48402	C11CJ49402
Printing Technology	PrecisionCore Inkjet Technology, Variable-Sized Droplet Technology	
Printing Method	PrecisionCore MicroTFP Printhead	
Print Head	9,600 Nozzles	
Nozzle Configuration	Pk:1,600, Mk:1,600	
Black Colour	C:1,600, M:1,600, Y:1,600, Gray:1,600	
Maximum Resolution	2,400 x 1,200 dpi	
Minimum Ink Droplet Volume	3.5pl	
Printing Specifications	A1 Size Premium Glossy Photo Paper 170gsm, 1200dpi x 1200dpi	
Print Speed	EPSON Standard (sRGB) / Quality: 111 sec	
Margin	Roll Paper	Right: Min. 3mm ¹ / Left : Min. 0mm ¹
	Cut Sheet	Top: Min. 3mm ¹ / Bottom: Min. 1mm ¹
Minimum Line Width	0.08 mm ² (0.02 mm ³)	
Ink System	Pigment Ink	
Ink Type	UltraChrome Pro 6 Ink	
Ink Brand Name	Cyan, Magenta, Yellow, Grey, Photo Black, Matte Black	
Colour	350, 700 ml	
Ink Capacity	Ink Cartridge	
Ink Case		
Paper Handling	Roll (Single Roll), Cut Sheet (Manual Feed), Poster Board (Manual Feed)	Roll (Double Roll), Cut Sheet (Manual Feed), Poster Board (Manual Feed)
Paper Path	Friction Feed	
Paper Feed Method	Max. 170 mm ⁴	
Maximum Roll Diameter	6.8kg	
Maximum Roll Weight	254 – 610 mm	
Paper Width (Roll)	203 – 610 mm	
Paper Width (Cut Sheet)	0.07 – 0.8 mm	
Paper Thickness (Roll)	Cut Sheet: 0.07 – 0.8 mm / Poster Board: 0.8 – 1.5 mm	
Paper Thickness (Manual)	91 m ⁵	
Maximum Printable Length	254mm (10"), 300mm (11.8"), 330mm (13"), 356mm (14"), 406mm (16"), 432mm (17"), 500mm (19"), 508mm (20"), 515mm (20.3"), 594mm (23"), 610mm (24")	
Borderless Sizes	The remaining amount is managed by the barcode printed on roll paper	
Roll Paper Remaining		
Connectivity	SuperSpeed USB, 100BASE-TX/1000BASE-T/IEEE802.11b/g/n/ac, USB Memory Stick	
Interface	ESC/P raster	ESC/P raster, HP-GL/2, HP RTL, Adobe PostScript 3, Adobe PDF 1.7
Printer Language		
USB Direct Print	Yes	
Memory	4GB	
HDD (Optional)	SSD 960GB	
Operating System	Windows 10, 8.1, 8, 7, Windows Vista, Windows XP (32bit/64bit)	
PC System Requirement	Windows Server 2019/2016/2012 R2/2012/2008/2003 R2/2003 SP2 or later	
Mac System Requirement	Mac OS X 10.6.8 or later, Mac OS 11 or later	
Utility Software	Windows - Printer driver - EpsonNet Setup - EpsonNet Print - EpsonNet Config SE - EPSON manuals - Manual Launcher - LFP Print Plug-in for Office	
Bundled in CD	Epson Media Installer - EpsonNet SetupManager - Epson Device Admin - Epson Edge Dashboard - Epson Print Layout - Epson Print Automate - Order Controller	
Web Delivery	Mac - Printer driver - EpsonNet Config SE - EPSON manuals - Epson Media Installer - Epson Edge Dashboard - Epson Print LayoutiOS/Android - Epson Smart Panel	
Electrical Specifications	AC 100 – 240V, 50/60Hz	
Voltage	AC 100V 3.4AAC 100-240V 3.4-1.6A	
Rated Current	Operating: Approx. 75W, Ready: Approx. 32W, Sleep: Approx. 2W, Standby: Approx. 0.3W	
Power Consumption		
Environmental Conditions	Operating: 10°C to 35°C / Storage: -20°C to 40°C	
Temperature	Operating: 20% to 80% (no condensation)	
Humidity	Storage: 5% to 85% (no condensation)	
Dimensions & Weight	1,365 x 499 x 975 mm	
Dimension (W x D x H)	Approx. 115.2kg	
Weight	Approx. 115.6kg	

¹ Might differ depends on applications/media.

² ISO/IEC 24790, Single weight matte paper, CAD/line drawing, speed, high speed=Off, finest detail=On.

³ Addressable.

⁴ Depending on the thickness of the paper. It is larger than the available outer diameter size. If roll paper is used, please confirm that it is within the outside diameter range.

⁵ Printable length is limited depending on restrictions of operating systems or applications.

Find out more at www.epson.com.sg/p-series

[f](#) EpsonSingapore [@](#) EpsonSingapore [v](#) EpsonSoutheastAsia [in](#) Epson Singapore

Epson Singapore Pte Ltd 438B Alexandra Road, Block B Alexandra Technopark, #04-01/04, Singapore 119968. Tel: (65) 6586-5500
Epson Customer Care Center 100G Pasir Panjang Road, #01-09 Interlocal Centre, Singapore 118523. Epson Helpdesk: 800 120 5564. Please refer to www.epson.com.sg/contact for opening hours.

SPECIFICATIONS

MODEL NUMBER	SC-P8530D	SC-P8530DM	SC-P8530DL
SKU Number	C11CJ50402	C11CJ51402	C11CJ75402
Printing Technology	PrecisionCore Inkjet Technology, Variable-Sized Droplet Technology		
Printing Method	PrecisionCore MicroTFP Printhead		
Print Head	9,600 Nozzles		
Nozzle Configuration	Pk:1,600, Mk:1,600		
Black Colour	C:1,600, M:1,600, Y:1,600, Gray:1,600		
Maximum Resolution	2,400 x 1,200 dpi		
Minimum Ink Droplet Volume	3.5pl		
Printing Specifications	B0 size Premium Glossy Photo Paper 170gsm: 152 sec (Speed), 281 sec (Quality), 614 sec (Max Quality)		
Print Speed	Plain Paper: 35 sec (Draft), 46 sec (Speed), 258 sec (High Quality)		
Margin	Roll Paper	Right: Min. 3mm ¹ / Left : Min. 0mm ¹	
	Cut Sheet	Top: Min. 3mm ¹ / Bottom: Min. 1mm ¹	
Scanning Specifications	Max. Scan Speed		
Max. Optical Resolution	10 ips		
Scanning Specifications	Max. Scan Speed		
Max. Optical Resolution	600 dpi		
Copying Specifications	Scaling		
Max. Copy	25 – 755%		
Ink System	Pigment Ink		
Ink Type	UltraChrome Pro 6 Ink		
Ink Brand Name	Cyan, Magenta, Yellow, Grey, Photo Black, Matte Black		
Colour	350, 700 ml		
Ink Capacity	1,600 ml		
Ink Case	Ink Cartridge		
Paper Handling	Roll (Double Roll), Cut Sheet (Manual Feed), Poster Board (Manual Feed)		
Paper Path	Friction Feed		
Paper Feed Method	Max. 170 mm ²		
Maximum Roll Diameter	12.5kg		
Maximum Roll Weight	254 – 1,118 mm		
Paper Width (Roll)	203 – 1,118 mm		
Paper Width (Cut Sheet)	0.07 – 0.8 mm		
Paper Thickness (Roll)	Cut Sheet: 0.07 – 0.8 mm / Poster Board: 0.8 – 1.5 mm		
Paper Thickness (Manual)	91 m ³		
Maximum Printable Length	254mm (10"), 300mm (11.8"), 330mm (13"), 356mm (14"), 406mm (16"), 432mm (17"), 500mm (19"), 508mm (20"), 515mm (20.3"), 594mm (23"), 610mm (24"), 700mm (27.5"), 728mm (28.6"), 841mm (33"), 914mm (36"), 1030mm (40.5"), 1188mm (44")		
Borderless Sizes	The remaining amount is managed by the barcode printed on roll paper		
Roll Paper Remaining			
Connectivity	SuperSpeed USB ¹ , 100BASE-TX /1000BASE-T/IEEE802.11b/g/n/ac, ESC/P raster, HP-GL/2*, HP RTL*, Adobe PostScript 3, Adobe PDF 1.7		
Interface	Yes		
Printer Language	4GB		
USB Direct Print	SSD 960GB		
Memory	Windows 10, 8.1, 8, 7, Windows Vista, Windows XP (32bit/64bit)		
HDD (Optional)	Windows Server 2019/2016/2012 R2/2012/2008/2003 R2/2003 SP2 or later		
Operating System	Mac OS X 10.6.8 or later, Mac OS 11 or later		
PC System Requirement	Windows - Printer driver - EpsonNet Setup - EpsonNet Print - EpsonNet Config SE - EPSON manuals - Manual Launcher - LFP Print Plug-in for Office - PS Driver - PS Folder		
Mac System Requirement	Windows - Printer driver - EpsonNet Setup - EpsonNet Print - EpsonNet Config SE - EPSON manuals - Manual Launcher - LFP Print Plug-in for Office - PS Driver - PS Folder		
Utility Software	Windows - Printer driver - EpsonNet Setup - EpsonNet Print - EpsonNet Config SE - EPSON manuals - Manual Launcher - LFP Print Plug-in for Office - PS Driver - PS Folder		
Bundled in CD	Windows - Printer driver - EpsonNet Setup - EpsonNet Print - EpsonNet Config SE - EPSON manuals - Manual Launcher - LFP Print Plug-in for Office - PS Driver - PS Folder		
Web Delivery	Mac - Printer driver - EpsonNet Config SE - EPSON manuals - Epson Media Installer - Epson Edge Dashboard - Epson Print Layout - PS DriveriOS/Android - Epson Smart Panel		
Electrical Specifications	AC 100 – 240V, 50/60Hz		
Voltage	AC 100V 3.4AAC 100-240V 3.4-1.6A		
Rated Current	Operating: Approx. 70W		
Power Consumption	Ready: Approx. 32W		
	Sleep: Approx. 2.0W		
	Standby: Approx. 0.3W		
Environmental Conditions	Operating: 10°C to 35°C / Storage: -20°C to 40°C		
Temperature	Operating: 20% to 80% (no condensation), Storage: 5% to 85% (no condensation)		
Humidity	1,848 x 499 x 975 mm		
Dimensions & Weight	Approx. 155kg		
Dimension (W x D x H)	Approx. 165kg		
Weight			

¹ Might differ depends on applications/media.

² Depending on the thickness of the paper. It is larger than the available outer diameter size. If roll paper is used, please confirm that it is within the outside diameter range.

³ Printable length is limited depending on restrictions of operating systems or applications.

Find out more at www.epson.com.sg/p-series

[f](#) EpsonSingapore [@](#) EpsonSingapore [v](#) EpsonSoutheastAsia [in](#) Epson Singapore

Epson Singapore Pte Ltd 438B Alexandra Road, Block B Alexandra Technopark, #04-01/04, Singapore 119968. Tel: (65) 6586-5500
Epson Customer Care Center 100G Pasir Panjang Road, #01-09 Interlocal Centre, Singapore 118523. Epson Helpdesk: 800 120 5564. Please refer to www.epson.com.sg/contact for opening hours.

Dimensions and Weight

SC-P8530D / P8530DM

Weight: Approx. 155kg



SC-P8530DL

Weight: Approx. 165kg



WHAT'S IN THE BOX

- Printer
- Initial ink cartridge (110ml)
- AC power cable
- Setup guide
- Software CD-ROM
- Maintenance box

OPTIONS

Roll Feed Spindle (44") (C12C936171)
 Production Stacker (44") (C12C937131)
 SSD Unit (C12C936671)

CONSUMABLE

Ink Cartridge

Photo Black	350ml	C13T48Y100
Cyan	350ml	C13T48Y200
Magenta	350ml	C13T48Y300
Yellow	350ml	C13T48Y400
Grey	350ml	C13T48YE00
Matte Black	350ml	C13T48Y800
Photo Black	700ml	C13T48R100
Cyan	700ml	C13T48R200
Magenta	700ml	C13T48R300
Yellow	700ml	C13T48R400
Grey	700ml	C13T48RE00
Matte Black	700ml	C13T48R800
Maintenance Tank		C13S210115
Borderless Maintenance Box		C13S210116
Printer Cutter Blade		C13S210117
Cleaning Stick		C13S090013

©2023 Epson Singapore Pte Ltd. All Rights Reserved. Reproduction in part or in whole, without the written permission from Epson, is strictly prohibited.

EPSON and EXCEED YOUR VISION are registered trademarks of Seiko Epson Corporation.

All other product names and other company names used herein are for identification purposes only and are the trademarks or registered trademarks of their respective owners.

Epson disclaims any and all rights in those marks. Projected images shown herein are simulations. The actual product design and contents may vary. Specifications are subject to change without notice and may vary between countries. Please check with local Epson offices for more information.

Apple, iPad and iPhone are trademarks of Apple Inc., registered in the U.S. and other countries. App Store is a service mark of Apple Inc.

Android is a trademark of Google Inc.

Dealer's Stamp

Information correct at time of printing. Printed January 2023